

Birmingham Central



25 Hagley Rd, Birmingham, B16 8FU, United Kingdom

Centrally located, in-between the city centre and Edgbaston, Birmingham Central by Charles Hope, benefits from being within walking distance of the upmarket Mailbox, for shopping and lifestyle. Near to both, Five Ways and New Street Railway Stations, with parking also available for transport. Attractions and venues, including The Birmingham Botanical Gardens, National SEA LIFE Centre Birmingham, Hippodrome and O2 – are all close by.



One bedroom Apartment

· 1 Bedroom · 1 Bathroom · 2 Guest



25 Hagley Rd, Birmingham,
B16 8FU, United Kingdom



Square meters 43.9 Square feet 473

One Bedroom Apartment - Birmingham Central. One bedroom with king-size bed with quality cotton linen, one bathroom with bath with shower, living area with sofa and dining furniture, fully equipped kitchen. Fast business grade Wifi included for free.



Check in and check out times

Check-in at 15:00

Check out at 11:00

Optional extras

Cot - £10 any length of stay

High chair - Free

Extra Bed - £15 per night

Two Bedroom Two Bathroom Apartment

· 2 Bedroom · 2 Bathroom · 4 Guest

 25 Hagley Rd, Birmingham,
B16 8FU, United Kingdom

 Square meters 61.5 Square feet 662

Two Bedroom Two Bathroom Apartment - Birmingham Central. Two bedroom with king-size beds with quality cotton linen, one bathroom with large shower and second bathroom is ensuite, living area with sofa and dining furniture and a fully equipped kitchen. Fast business grade Wifi included for free.



Check in and check out times

Check-in at 15:00

Check out at 11:00

Optional extras

Cot - £10 any length of stay

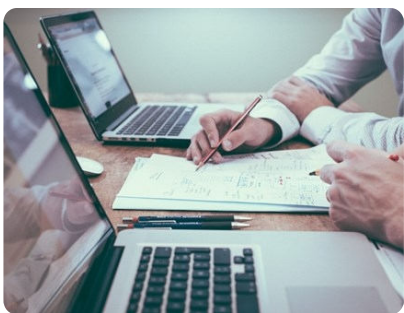
High chair - Free

Extra Bed - £15 per night

Facilities



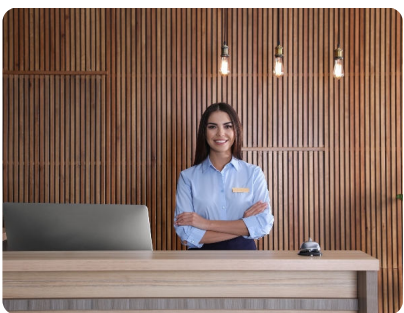
Gym



Meeting rooms



Communal lounge



Reception



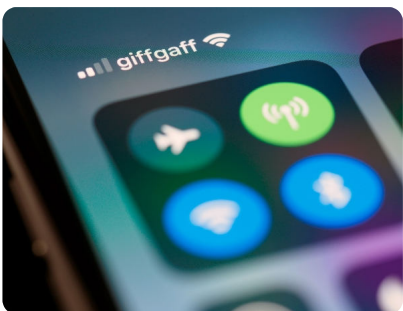
Parking available to book



24hr emergency helpline



24hr security



Wifi in public areas



Lift access

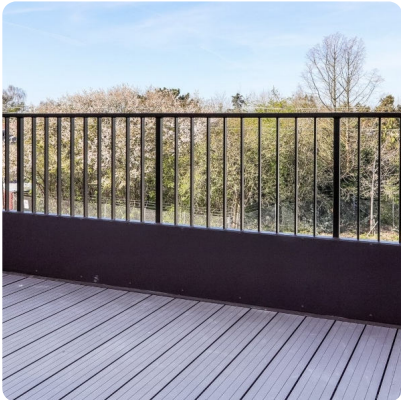
Amenities



Wifi



Fully equipped Kitchen



Balcony



Smart TV



Cleaning supplies



Bathroom toiletries



Coffee machine



Hardwood floors



King size beds



Dishwasher



Iron and ironing



Hairdryer



Vacuum cleaner



nighchair (Free -
Need to order)



Cot (£10 per stay)

Amenities



Kettle



Toaster



Washer/dryer



Contactless check-in



Tea and coffee
essentials welcome
pack



Kitchen starter pack
with dishwasher
liquid and tablets



Weekly
housekeeping



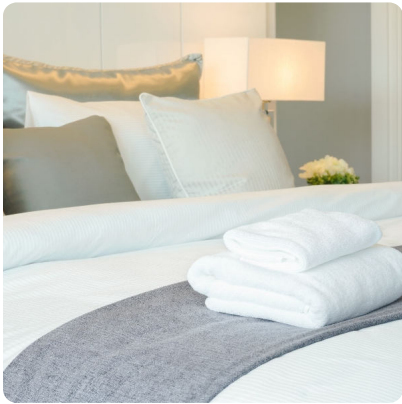
Microwave



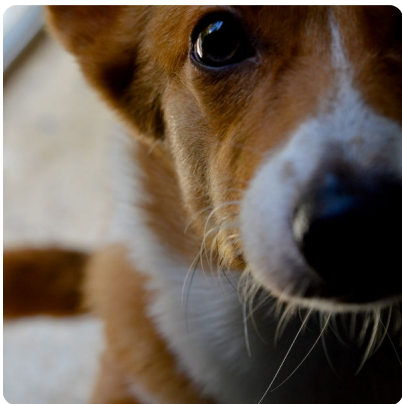
Washer/dryer



Oven and hobs



Linen and towelst



Pets allowed (extra
charge per stay)

Distances

Attractions

- Rock Up Birmingham**
0.5 km | 0.3 m | 6 min walk
- Everyman Cinema**
1.8 km | 1.1 m | 24 min walk
- The Birmingham Botanical Gardens**
1.1 km | 0.7 m | 14 min walk
- LEGOLAND Discovery Centre**
1.3 km | 0.8 m | 15 min walk
- National SEA LIFE Centre Birmingham**
1.0 km | 0.6 m | 12 min walk

Shopping

- Bullring Shopping Centre**
1.9 km | 1.2 m | 26 min walk
- Broadway Plaza Shopping Centre**
0.3 km | 0.2 m | 4 min walk
- The Mailbox Shopping Centre**
1.5 km | 0.9 m | 18 min walk

Events

- O2 Academy Birmingham**
1.6 km | 1.0 m | 20 min walk
- Birmingham Hippodrome**
1.7 km | 1.1 m | 22 min walk

Coffee Shops

- Starbucks @ Hagley Road**
0.2 km | 0.1 m | 2 min walk
- Costa Coffee Birmingham Drive Thru**
0.3 km | 0.2 m | 4 min walk
- Laghi's Delhi**
0.3 km | 0.2 m | 4 min walk

Parks

- Chamberlain Gardens (park, outdoor gym & childrens play area)**
0.8 km | 0.5 m | 10 min walk
- Edgbaston Reservoir**
1.9 km | 1.2 m | 25 min walk
- Summerfield Park**
2.2 km | 1.4 m | 28 min walk

Transport

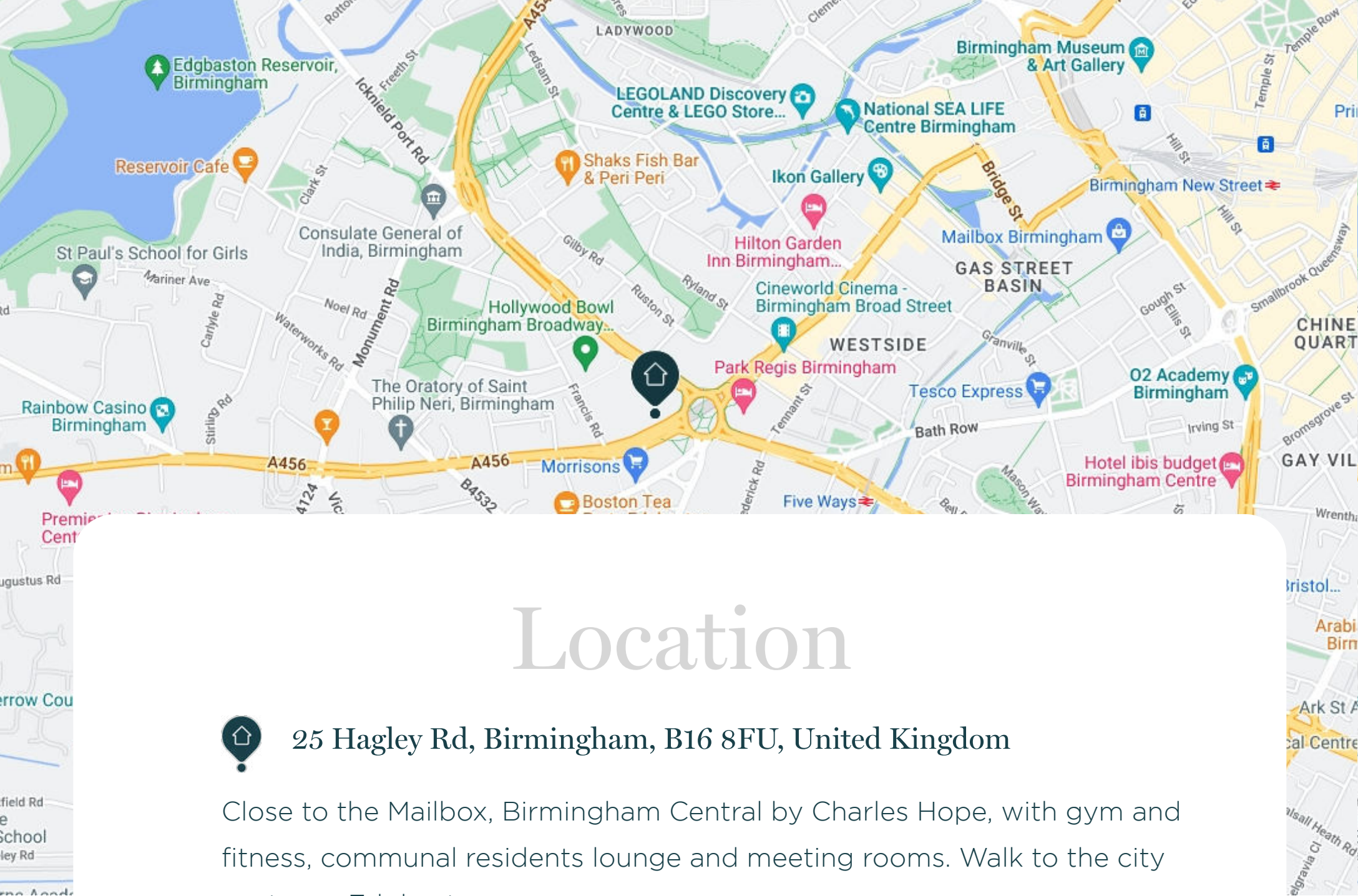
- New Street Railway Station**
1.7 km | 1.1 m | 24 min walk
- Five Ways Railway Station**
0.7 km | 0.4 m | 9 min walk
- Birmingham International Airport**
19.2 km | 12.0 m | 30 min drive

Restaurants

- Nando's Birmingham- Broad Street(Portugese African)**
0.7 km | 0.4 m | 8 min walk
- Varanasi (Indian)**
0.7 km | 0.4 m | 9 min walk
- Food Republic (comfort food)**
0.8 km | 0.5 m | 10 min walk
- Mellow's Bar & Restaurant (Caribbean)**
0.7 km | 0.4 m | 7 min walk
- Restaurant at The Plough & Harrow Hotel**
0.7 km | 0.4 m | 8 min walk
- Fogo Bar & Kitchen (Italian)**
0.8 km | 0.5 m | 10 min walk
- Colbeh, Kitchen & Bar (Persian)**
1.0 km | 0.6 m | 12 min walk

Supermarkets, stores & markets

- Bullring Indoor Market**
1.9 km | 1.2 m | 26 min walk
- Co-op Food**
1.3 km | 0.8 m | 17 min walk
- Tesco Express**
1.0 km | 0.6 m | 14 min walk
- Morrisons Supermarket**
0.2 km | 0.1 m | 2 min walk



Location



25 Hagley Rd, Birmingham, B16 8FU, United Kingdom

Close to the Mailbox, Birmingham Central by Charles Hope, with gym and fitness, communal residents lounge and meeting rooms. Walk to the city centre or Edgbaston.

Call

London

0044 (0) 203 983 6300

Copenhagen

0045 (0) 787 24540

Enquire

<https://www.charleshope.co.uk/enquire/>

Short to long stays. Serviced apartments Birmingham.

Work, relax and stay fit whilst you're away. The large on-site gym and nearby canal and parks provide running and exercise options to keep things interesting. The communal lounge for residents, keeps things social and provides a peaceful place to meet. On-site meeting rooms can be booked. Birmingham has lots of places to eat and drink – try some of the places we have listed, or head to the city centre or Mailbox.

Birmingham Central by Charles Hope has fully furnished stylish one and two bedroom apartments. Spacious, each apartment has business grade Wifi, smart TV, hardwood floors, living room, fully equipped kitchens, coffee makers, dishwasher and wash/dryer. Bedrooms have king-size beds with high quality cotton linen.

The property has a staffed reception, Wifi in public areas, 24hr security, emergency helpline, and lift access to floors. Pets are allowed for a charge per stay (by arrangement) and secure parking can be booked for £10 per day. Weekly cleaning (for guests staying over a week).