

Canary Wharf



32 Harbour Way, Sirocco Tower, London, E14 9YX

Situated in Canary Wharf, on the Isle of Dogs, Canary Wharf by Charles Hope, has excellent transport connections with central London. The ExCel centre and O2 Arena are easily accessible. The South Dock marina is on the doorstep of the Sailmakers, and the Thames River flows on either side. There are a number of parks close by – Mudchute Park and Farm, Millwall Park and the largest, Greenwich Park, is home to the Old Royal Observatory, the Royal Naval College and the National Maritime Museum.



One bedroom Apartment

· 1 Bedroom · 1 Bathroom · 2 Guest



32 Harbour Way Sirocco Tower
London, E14 9YX, United Kingdom



Square meters 51.0 Square feet 549

One Bedroom Apartment - Canary Wharf. One bedroom with king-size bed with quality cotton linen, one bathroom with large shower living area with sofa, and dining furniture, fully equipped kitchen. Fast business grade Wifi included for free



Check in and check out times

Check-in at 15:00

Check out at 11:00

Optional extras

Cot - £10 any length of stay


High chair - Free

Extra Bed - £15 per night

Parking - £10 per night

Two Bedroom Two Bathroom Apartment

· 2 Bedroom · 2 Bathroom · 4 Guest

 32 Harbour Way Sirocco Tower
London, E14 9YX, United Kingdom

 Square meters 61.5 Square feet 622

Two Bedroom Two Bathroom Apartment - Canary Wharf. Two bedroom with king-size beds with quality cotton linen, one bathroom with large shower and second bathroom is en suite, living area with sofa and dining furniture and a fully equipped kitchen. Fast business grade Wifi included for free.



Check in and check out times

Check-in at 15:00

Check out at 11:00

Optional extras

Cot - £10 any length of stay

High chair - Free

Extra Bed - £15 per night

Parking - £10 per night

Extra Bed - £15 per night

Parking - £10 per night

One Bedroom Executive

· 1 Bedroom · 1 Bathroom · 4 Guest



32 Harbour Way Sirocco Tower
London, E14 9YX, United Kingdom

One Bedroom Executive Apartment - Canary Wharf.
One bedroom with king-size bed with quality cotton linen, one bathroom with large shower, living area with sofa and dining furniture fully equipped kitchen. Fast, business grade Wifi included for free.



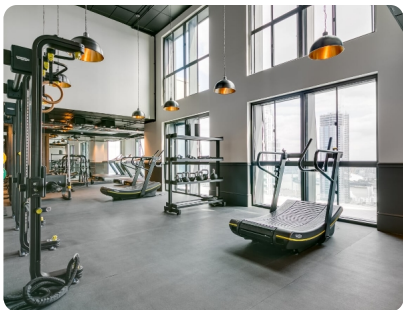
Check in and check out times

Check-in at 15:00
Check out at 11:00

Optional extras

Cot - £10 any length of stay
High chair - Free
Extra Bed - £15 per night
Parking - £10 per night

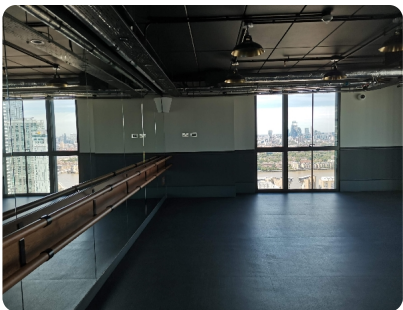
Facilities



Gym & fitness centre



Spinning studio



Yoga room



Co-living space



Meeting rooms



Private cinema



Chill out room



Reception



Parking available to book



24hr emergency helpline



24hr security



Wifi in public areas



Lift access



Private dining room



Co-working space



Roof terrace



Boxercise studio



Zen room



Therapy room

Amenities



Wifi



Fully equipped Kitchen



Balcony



Smart TV



Cleaning supplies



Bathroom toiletries



Nespresso machine



Hardwood floors



Dishwasher



Iron and ironing



Hairdryer



Vacuum cleaner



nighchair (Free -
Need to order)



Cot (£10 per stay)

Amenities



Kettle



Toaster



Air con



Contactless check-in



Tea and coffee
essentials welcome
pack



Kitchen starter pack
with dishwasher
liquid and tablets



Weekly
housekeeping



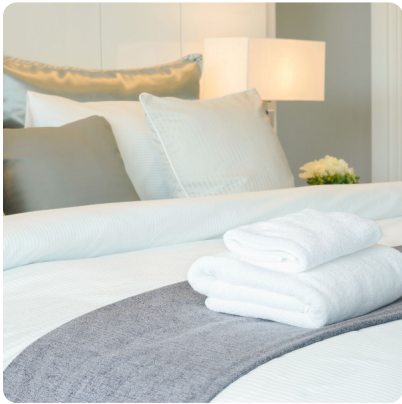
Microwave



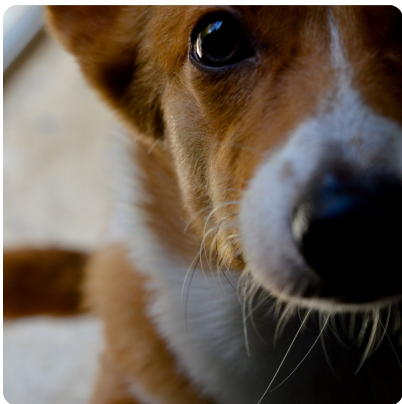
Washer/dryer



Oven and hobs



Linen and towelst



Pets allowed (extra
charge per stay)

Distances

Attractions

- Mudchute Farm**
1.3 km | 0.8 m | 16 min walk
- Cutty Sark**
2.6 km | 1.6 m | 32 min walk
- Folly House Beach**
1.6 km | 1.0 m | 20 min walk

Shopping

- Canary Wharf Shopping Centre**
0.6 km | 0.4 m | 8 min walk

Supermarkets, stores and markets

- Tesco Express**
0.2 km | 0.1 m | 3 min walk
- Co-op Food Isle of Dogs**
0.3 km | 0.2 m | 6 min walk
- Billingsgate Market**
1.8 km | 1.1 m | 22 min walk
- Mark and Spencers**
0.7 km | 0.4 m | 10 min walk

Coffee Shops

- Starbucks Canary Wharf**
0.7 km | 0.4 m | 10 min walk
- Cafe Nero Canary Wharf**
0.7 km | 0.4 m | 10 min walk

Parks and waterways

- South Dock**
0.3 km | 0.2 m | 4 min walk
- Sir John McDougall Gardens**
0.8 km | 0.5 m | 10 min walk
- Millwall Outer Dock**
0.3 km | 0.2 m | 4 min walk
- Island Gardens**
2.1 km | 1.3 m | 26 min walk
- Greenwich Park**
3 km | 1.9 m | 40 min walk

Transport

- Canary Wharf Tube Station**
0.8 km | 0.5 m | 10 min walk
- South Quay DLR Tube Station**
0.5 km | 0.3 m | 5 min walk
- London City Airport**
6.7 km | 4.2 m | Take the DLR from South Quay or taxi

Events

- ExCel London**
3.5 km | 2.2 m | Take the DLR from South Quay
- O2 Arena**
3.2 km | 2.0 m | Take the Jubille line from Canary Wharf tube station 1.0 miles (16 mins via tube)

Restaurants

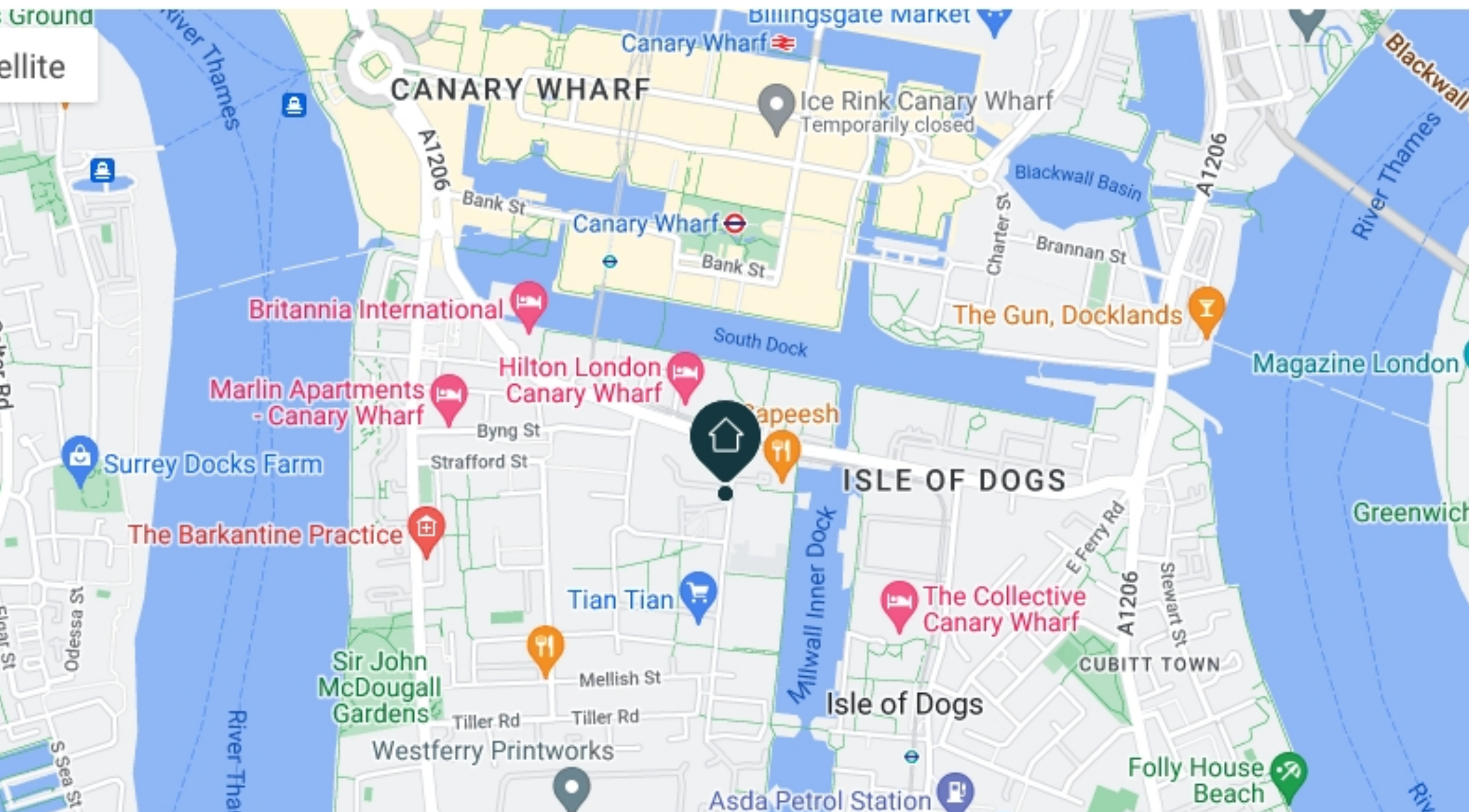
- Lime Bar and Restaurant (Indian)**
0.8 km | 0.5 m | 10 min walk
- The Ivy Canary Wharf (British)**
1.1 km | 0.6 m | 12 min walk
- ROKA (Japanese)**
0.8 km | 0.5 m | 10 min walk
- Gaucha Canary Wharf (South American)**
1.1 km | 0.7 m | 14 min walk
- Big Easy Canary Wharf (American)**
1.0 km | 0.6 m | 13 min walk
- Garbanzos**
0.7 km | 0.4 km | 9 min walk
- Five Guys Canary Wharf**
0.7 km | 0.4 m | 10 min walk

Location



32 Harbour Way, Sirocco Tower, London, E14 9YX

Located by the South Dock, welcome to Canary Wharf by Charles Hope. Sleek and decked-out apartments with business centre, gym, meeting rooms and residents lounge.



Short to long stays. Canary Wharf serviced apartments.

Offering a super set up for working whilst in London – public area wifi, business centre and meeting rooms. Keep your fitness routine going away from home at the large on-site gym, spinning and yoga rooms. Watch a movie at the on-site private cinema, or unwind in the residents lounge. If you enjoy cooking, walk to Billings-gate market, close by, to source some freshly caught seafood. Well known supermarkets and shops are a short walk.

All apartments, at Canary Wharf by Charles Hope, are smartly designed with contactless check-in. Each one has a balcony with stunning views and comes with fast wifi, air con, king-size beds, dark wood floors, spacious living, smart TVs. Guests are supplied welcome packs with kitchen and bathroom essentials. Fully equipped kitchens, have high end appliances, including nespresso makers, dishwasher and washer/dryer.

The property has 24hr security and emergency helpline. All floors are accessed by lifts. Weekly cleaning for reservations staying over a week. Pets are allowed for a charge per stay. Secure parking can be booked on-site. There is also a chill-out room, roof terrace, Japanese room and communal library for unwinding. Book a treat-ment in the therapy room - menu available to review.