

Salisbury

 58 Windsor Street, Salisbury, SP2 7EA

Salisbury Residences by Charles Hope is situated just a short walk from the train station, Mompesson House by The National Trust and The Cathedral. Queen Elizabeth Gardens and the River Avon are nearby, and perfect for an enjoyable walk. There are two leisure and sports facilities nearby - Five Rivers Leisure Centre and Salisbury and South Wilts Sports Club.



Three Bedroom House

· 3 Bedroom · 1 Bathroom · 5 Guest

 58 Windsor Street, Salisbury, SP2 7EA

 Square meters 108 Square feet 1,163

Three Bedroom House - Salisbury. Our accommodation feature king-size double beds with quality cotton linen, large bathroom, a living area with sofa and dining furniture, plus a fully equipped kitchen. Fast business grade Wifi is included for free.



Check in and check out times

Check-in at 15:00

Check out at 11:00

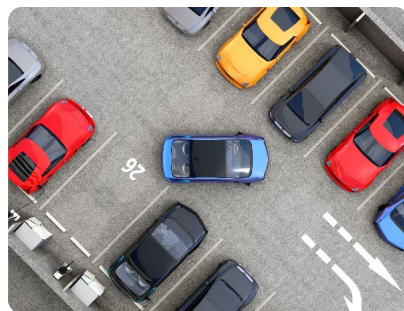
Optional extras

Cot - £10 any length of stay

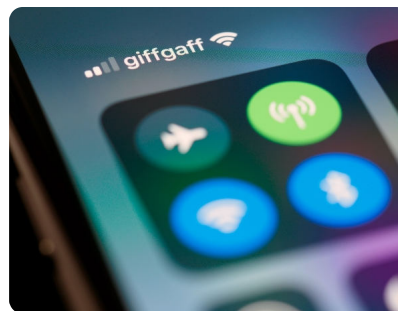
High chair - Free

Extra Bed - £15 per night

Facilities



Parking available to book



Wifi in public areas



24hr emergency helpline

Amenities



King size beds



Wifi



Fully equipped
Kitchen



Smart TV



Cleaning Supplies



Bathroom toiletries



Hardwood floors



Dishwasher



Hairdryer



Vacuum cleaner

Amennities



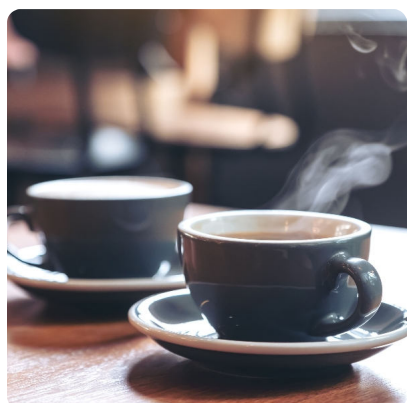
Kettle



Toaster



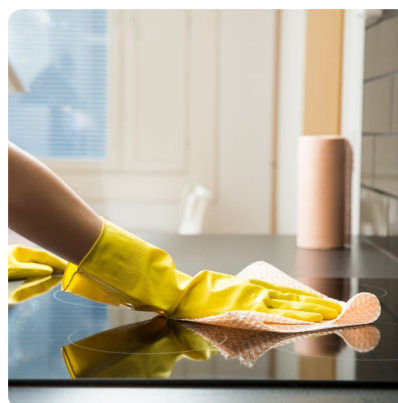
Washer/dryer



Tea and coffee essentials welcome pack



Kitchen starter pack with dishwasher liquid and tablets



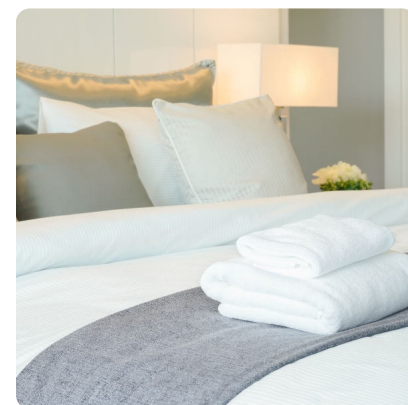
Weekly housekeeping



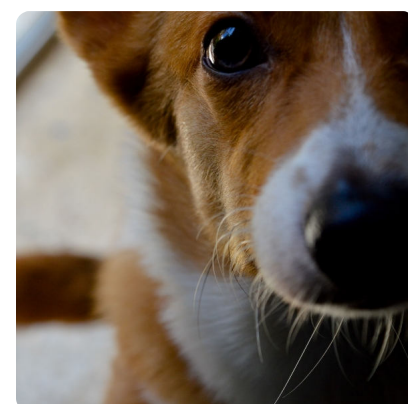
Washer/dryer



Oven and hobs



Linen and towelst



Pets allowed (extra charge per stay)

Distances

Attractions & popular

Salisbury Cathedral

1.1 km | 0.7 m | 15 min walk

Stone Henge

13.8 km | 8.6 m | 15 min drive

National Trust, Mompesson House

1.1 km | 0.7 m | 15 min walk

Longford Castle

8.5 km | 5.3 m | 16 min drive

Transport

Salisbury Train Station

0.5 km | 0.3 m | 7 min walk

Shopping

Salisbury City Centre

1.0 km | 0.6 m | 13 min walk

Parks

Basildon Park

13 km | 8.1 m | 21 min drive

Bealle Park

13 km | 8.1 m | 21 min drive

Wellington Country Park

12.2 km | 7.7 m | 17 min drive

Supermarket, stores and markets

Tesco Express

0.5 km | 0.3 m | 5 min walk

Marks and Spencers

1.1 km | 0.7 m | 15 min walk

Marks and Spencers

1.1 km | 0.7 m | 15 min walk

Restaurants

Everest Brasserie

0.3 km | 0.2 m | 3 min walk

The Kathmandu Kitchen

0.4 km | 0.2 m | 4 min walk

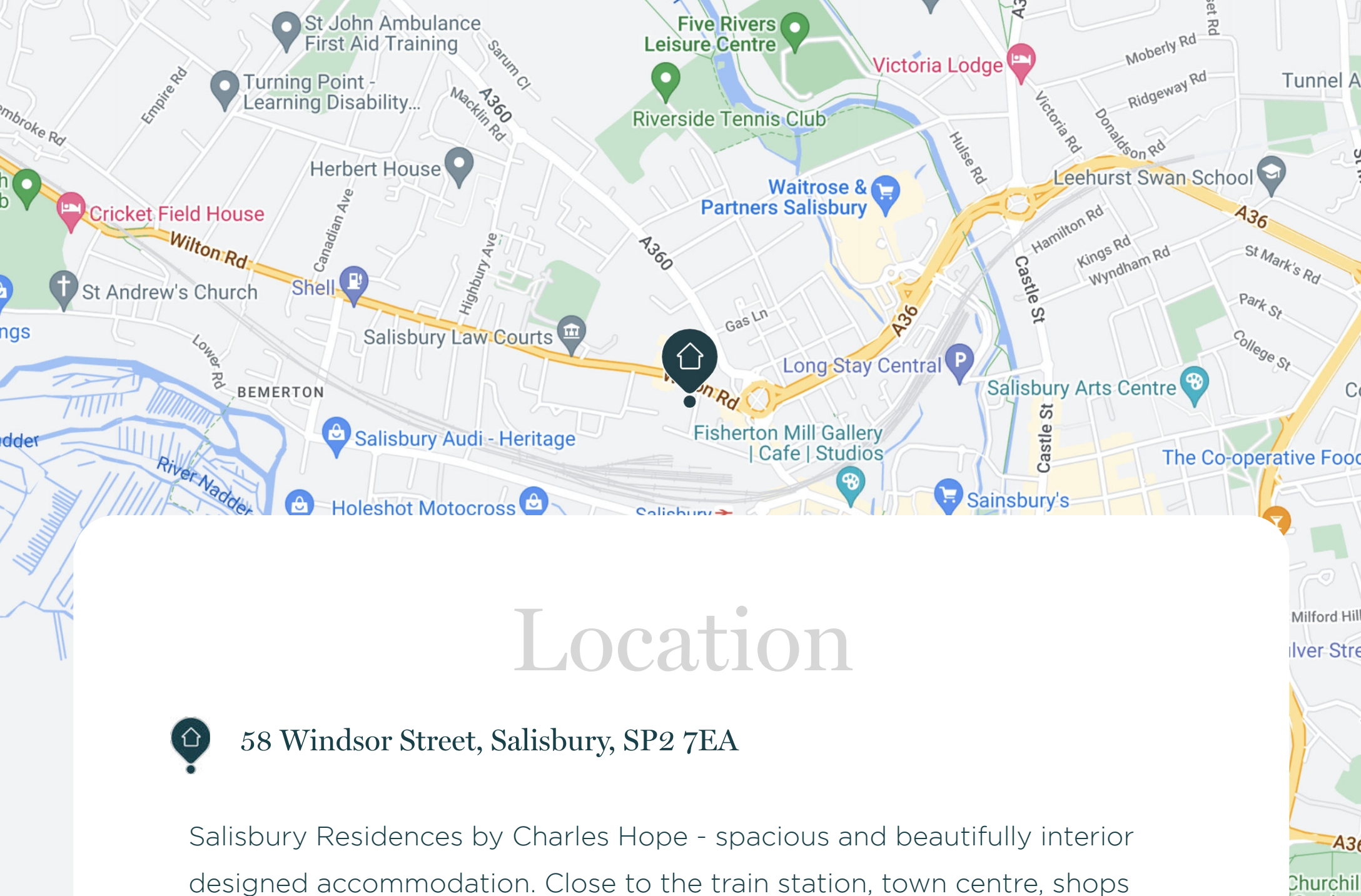
Coffee shops

Snack Packers Sandwich Shop

0.5 km | 0.3 m | 5 min walk

Costa Coffee @ 12 Butcher Row

1.0 km | 0.6 m | 12 min walk



Location

 58 Windsor Street, Salisbury, SP2 7EA

Salisbury Residences by Charles Hope - spacious and beautifully interior designed accommodation. Close to the train station, town centre, shops and leisure facilities.

Call

London

0044 (0) 203 983 6300

Copenhagen

0045 (0) 787 24540

Enquire

<https://www.charleshope.co.uk/enquire/>

Short to long stays. Salisbury serviced accommodation.

Get out in the fresh air and enjoy the River Avon and the local Queen Elizabeth Gardens. Stay active at the Five Rivers Leisure Centre, or nearby Golf Range. Close by supermarkets provide lot's of food ingredient options to be creative with, in the spacious and fully furnished kitchen.

Large three bedroom beautifully appointed serviced accommodation - Salisbury Residences by Charles Hope. All with business grade wifi, king size beds, modern bathrooms, smart TVs, sofas and dining furniture. Fully equipped kitchens each have coffee maker, washer / dryer, oven, microwave, toaster, kettle, crockery and glassware.

Contactless check in makes arrival easy and a 24-hour emergency helpline is provided. There is weekly cleaning (for guests staying over a week) and pets are permitted with a charge. Cots and highchairs are available on request.