

An aerial photograph of Southampton, UK, showing the city skyline and the waterfront. The image is used as a background for the text. The city features a mix of modern and traditional architecture, with a prominent tall building in the center. The waterfront is visible with several boats and a pier. The water reflects the city and the sky.

 Charles Hope

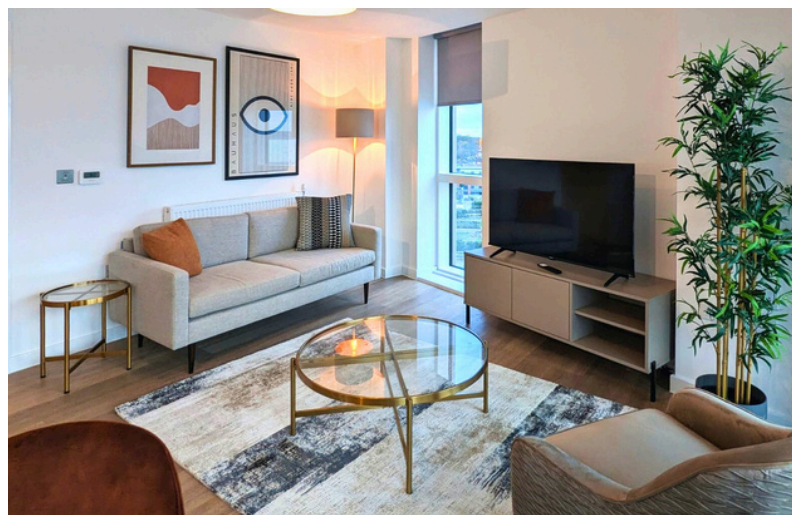
**SOUTHAMPTON
WATERSIDE**

Intro/ Property Summary

Our serviced apartments are situated in the heart of Centenary Plaza close to Southampton Harbour. The prime location offers convenient access to coffee shops, pubs, and restaurants. Immerse yourself in the lively atmosphere of the Quayside Wine Bar, where evenings are filled with the clink of glasses and the warmth of shared moments.

Nature lovers will appreciate the Golden Jubilee Butterfly Walk and the Weston Shore Promenade which are both nearby. The Southampton Water Activities Centre is just across the bridge where you can learn how to sail and get involved in other thrilling activities. If you're a football fan, St Mary's Stadium is only a 30-minute walk away.

There is onsite parking which includes one space per apartment; if you require further parking the closest is directly to the left of the property, which is paid for at the exit. The nearest train station is Woolston Station, which is a 10-minute walk away, whilst Southampton airport is a 21-minute drive from our apartments. Uber operates in the city, so it's easy to get a taxi if you have an account.



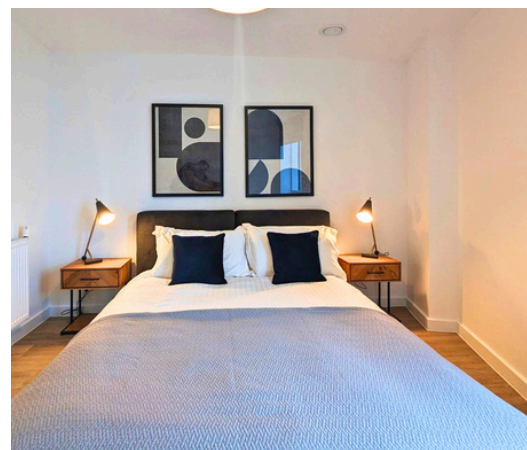
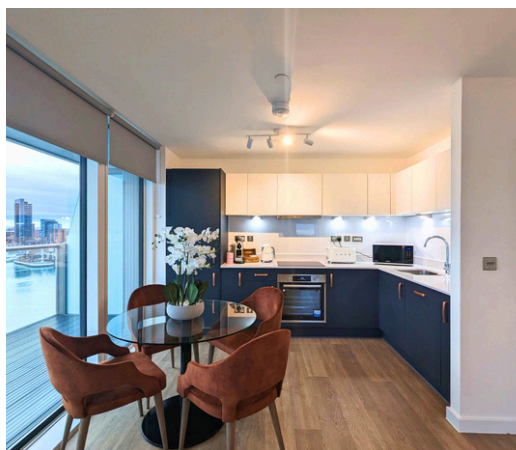
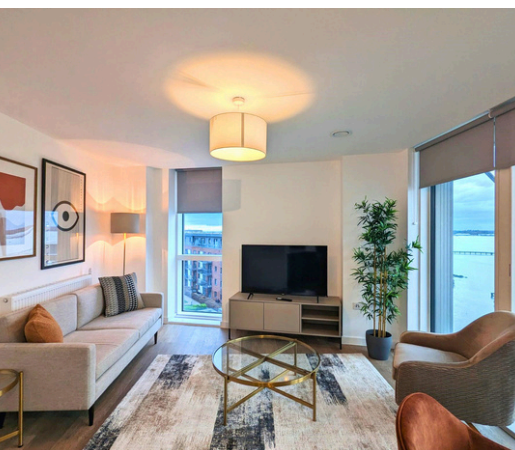
Bedrooms

One Bedroom Apartment - Balcony

Our One Bedroom Apartments are 48sqm (517sqft) and feature a living area, kitchen, one bedroom and one bathroom. As you step into the apartment, antico flooring and elegant window coverings that allow just the right amount of natural light.

The kitchen is fully equipped with modern appliances. The living area is furnished with a sofa, a flat-screen TV and dining furniture. The bedroom features a king bed, wardrobe, and bedside tables. The bathroom has a bath over shower. Take advantage of the seamless connection between indoor and outdoor living as you step onto your private balcony with views of the harbour and ocean.

Ideal for an individual or a couple staying for business/leisure.



Two Bedroom Apartment - Balcony

The Two Bedroom Two Bathroom is 68sqm (739sqft) and features a living area, a kitchen, two bedrooms, and two bathrooms. As you step into the apartment, antico flooring and elegant window coverings allow just the right amount of natural light.

The kitchen is fully equipped with modern appliances. The living area is furnished with a sofa, a flat-screen TV and dining furniture. The master bedroom is furnished with a king-size bed, storage space, and an ensuite with a shower. The second bedroom is furnished with a king-size bed, wardrobe storage, and large windows that allow natural light to flood the room. The main bathroom has a bath over shower.

As you step onto your private balcony, you can unwind and enjoy the amazing view of the surrounding harbour and ocean. Ideal for four people staying for business/leisure or a small family.

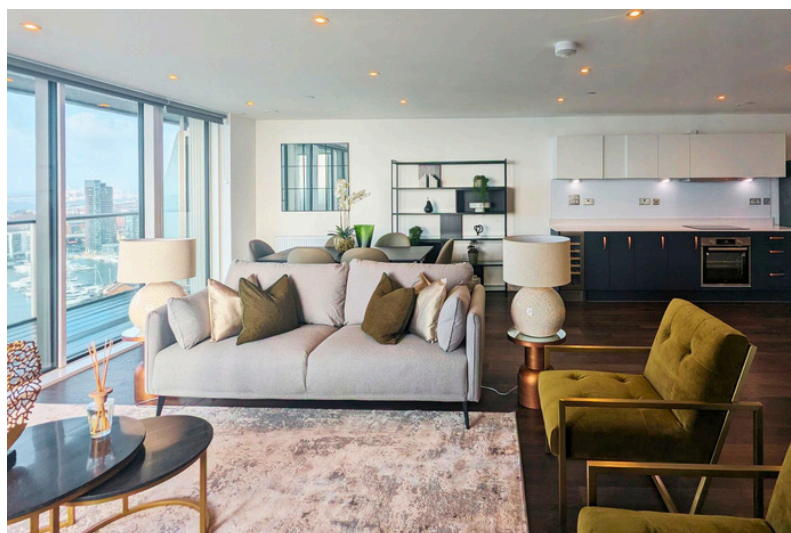
Bedrooms

Penthouse Apartment - Balcony

The Penthouse Apartment is 112sqm (1205sqft), featuring a living area, a kitchen, two bedrooms, and two bathrooms. Step into a realm of elegance with antico flooring and tasteful window coverings that enhance the natural light, creating an ambience of timeless beauty.

The kitchen is fully equipped with modern appliances. The living area is furnished with a sofa, a flat-screen TV and dining furniture. The master bedroom has large windows that allow natural light to flood the room and is furnished with a king-size bed, storage space, and has an ensuite with a shower. The second bedroom is furnished with a king-size bed and wardrobe storage. The main bathroom has a bath over shower.

The private balcony invites you to savour panoramic harbour and ocean views. Ideal for four people staying for business/leisure or a small family.



Additional info

Check in and check-out times.

Check-in at 15:00

Check out at 11:00

Access

- On arrival at the apartment all you need to do is give us a call on +44(0)20 3983 6300 and we can provide remote access to the building.

Parking

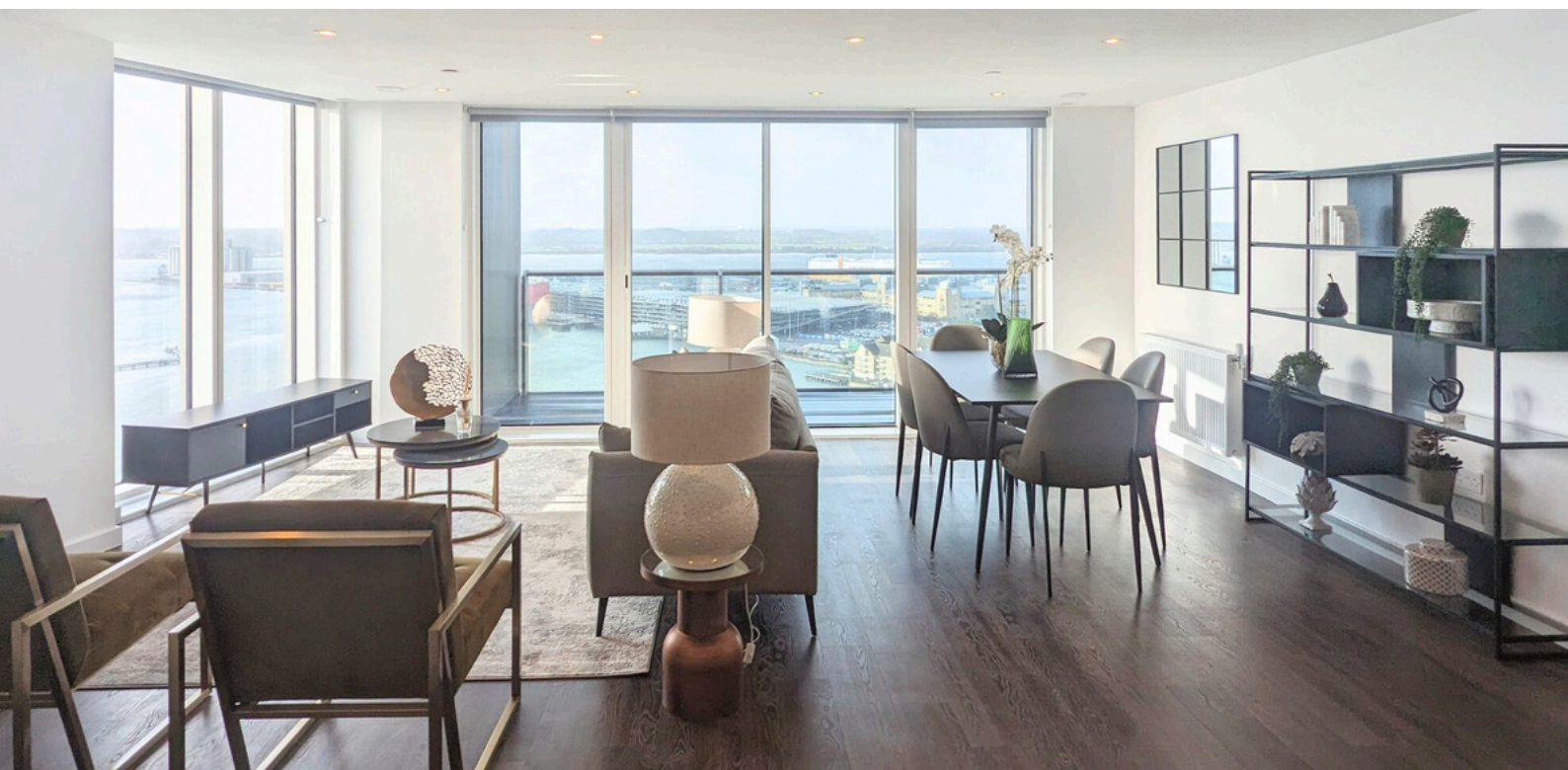
- There is parking for guests but only 1 bay per apartment, this can be accessible via the fob in the Room with a permit which must go into the vehicle and be visible. So, need to check in first.

Booking Restrictions & Deposits

- 21 years of age
- There is a 15 mile local restriction

Pets

- Pets allowed (on arrangement only) and are chargeable
- 15kg weight limit

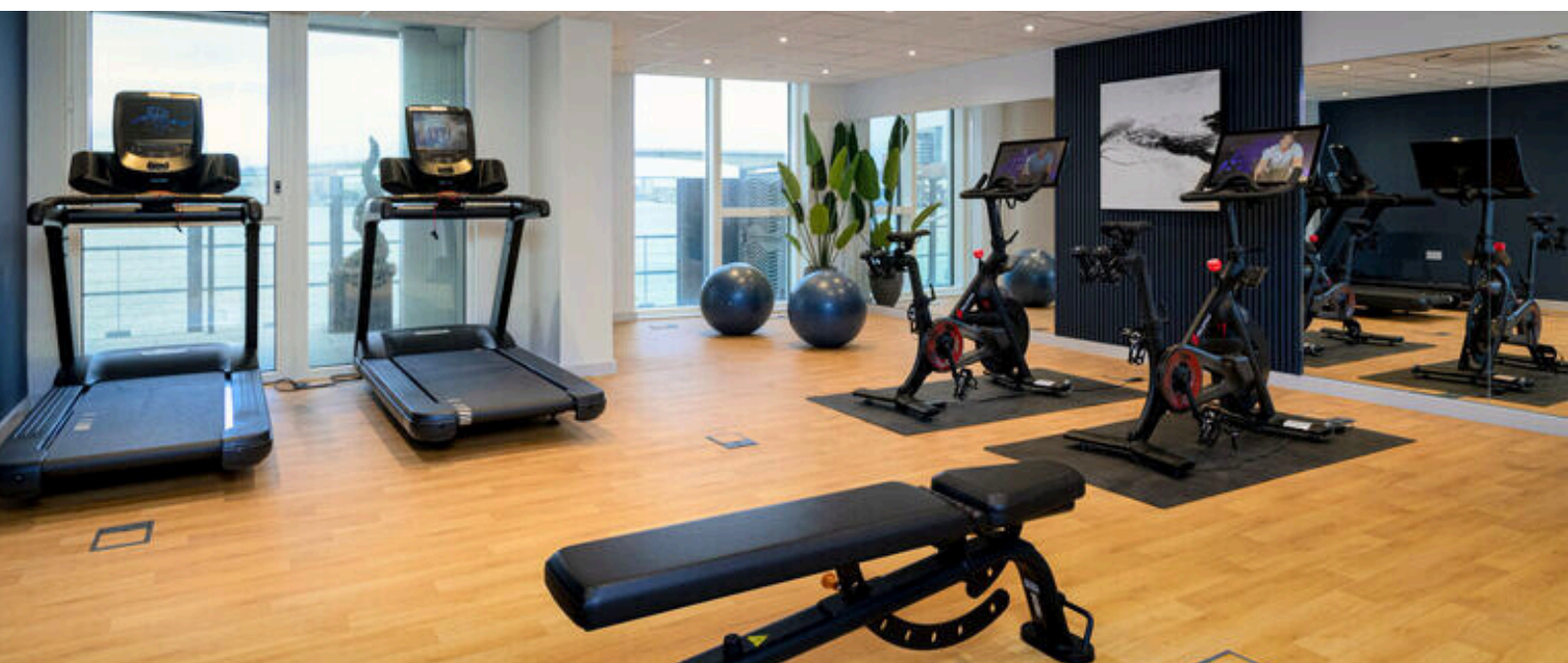


Facilities and Amenities

Our serviced apartment in Southampton offers a range of amenities to ensure a comfortable and enjoyable stay.

Here is a list of amenities at Southampton Waterside by Charles Hope.

-  Wi-Fi is available in the rooms.
-  Fully Equipped Kitchen
-  Stovetop
-  Oven
-  Refrigerator
-  Toaster
-  Nespresso machine
-  Microwave
-  Smart TV
-  Towels
-  Hairdryer
-  Parking
-  Washer/Dryer
-  Lift Safety & Security
-  CCTV in common areas
-  Smoke alarms
-  24-hour security
-  Heating
-  Cleaning services
-  Gym & Yoga Studio
-  Co-working Space
-  Resident Lounge
-  Meeting Room



Distances Train station + Attractions

- Prime location close to St Mary's Stadium & Woolston Waterfront
- Great transport links: Southampton Central Station is 10-minutes' drive away & Southampton Airport a 20-minute drive
- Enjoy a variety of dining options from local cafes to trendy bars and restaurants
- A shopper's paradise awaits at Westquay & Marlands shopping centre with high street stores, boutiques, and dining options

Map + location.

