

The background image shows a marina at dusk. Several sailboats are docked at a wooden pier in the foreground. In the background, modern multi-story apartment buildings with balconies and large windows are visible. The buildings' lights are on, and their reflections are visible in the calm water of the marina. The sky is overcast with soft, diffused light.

Charles Hope

SOUTHAMPTON
CENTRE

Intro/ Property Summary

Welcome to Charles Hope Southampton Centre, the perfect destination for serviced apartments in Southampton, ideally located between the vibrant city centre and the picturesque harbour. Immerse yourself in The Village, a lively development by the yacht-filled marina on the River Itchen, offering an array of steakhouses, brasseries, international restaurants, and bars with outdoor terraces alongside the prestigious Royal Southampton Yacht Club. Nearby, the Westquay shopping centre features over 100 shops, eateries, and entertainment options.

Explore Southampton's rich heritage. Historic sites like the Bargate, Medieval Merchants House, and Southampton Town Walls are all within walking distance, while the 1865 venue offers music and comedy events just 100 meters away. Discover comfort, convenience, and culture at Southampton Serviced Accommodation by Charles Hope, where our spacious and thoughtfully designed apartments provide a welcoming retreat in the heart of this historic city.



Bedrooms

One Bedroom Apartment - Balcony

The One Bedroom Apartment is 46sqm (500sqft) and features a living area, a fully equipped kitchen, one bedroom, and one bathroom.

The kitchen is fully equipped with modern appliances. The living area is furnished with a sofa, a flat-screen TV and dining furniture. The bedroom features a king-size bed, wardrobe, and bedside tables.

The bathroom has a shower over bath. Ideal for an individual or a couple staying for business / leisure.



One Bedroom Apartment - Rooftop Terrace

The One Bedroom Apartment - Rooftop Terrace is 47sqm (505sqft) and features a living area, a fully equipped kitchen, one bedroom, and one bathroom.

The kitchen is fully equipped with modern appliances. The living area is furnished with a sofa, a flat-screen TV and dining furniture. The bedroom features a king-size bed, wardrobe, and bedside tables. The bathroom has a spacious shower.

Ideal for an individual or a couple staying for business / leisure.

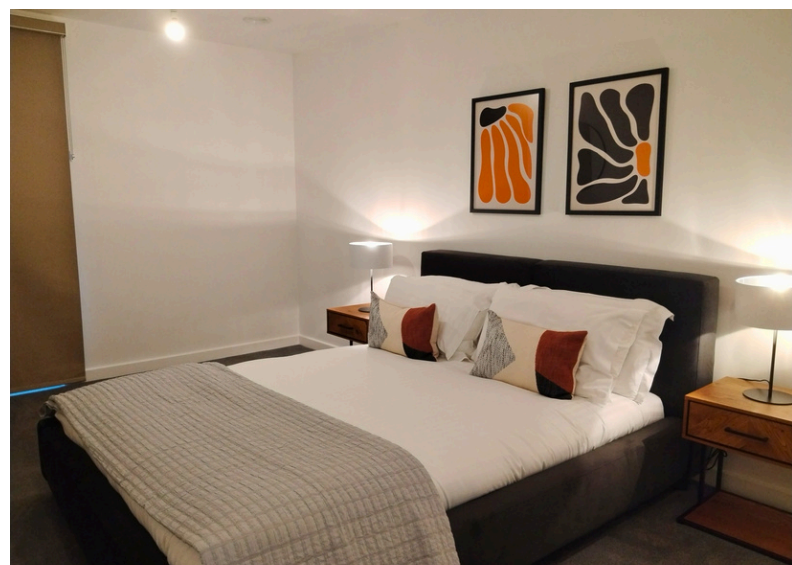
Bedrooms

Superior Two Bedroom Apartment - Rooftop Terrace

The Superior Two Bedroom Apartment - Rooftop Terrace is 67.8sqm (729sqft) and features a living area, a fully equipped kitchen, two bedrooms, and two bathrooms.

The kitchen is fully equipped with modern appliances. The living area is furnished with a sofa, coffee table, a flat-screen TV and dining furniture. The two bedrooms have a king-size bed, bedside tables, and a wardrobe. The bathroom has a spacious shower with contemporary features.

This apartment has a balcony. Ideal for up to four people staying.



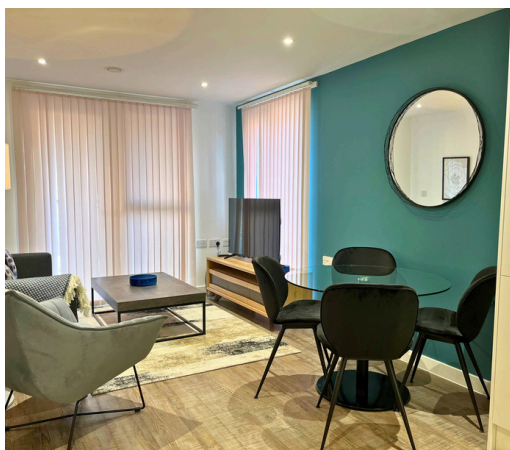
Bedrooms

Superior Two Bedroom Apartment - Balcony

The Superior Two Bedroom Apartment - Balcony is 67sqm (727sqft) and features a living area, a fully equipped kitchen, two bedrooms, and one bathroom.

The kitchen is fully equipped with modern appliances. The living area is furnished with a sofa, coffee table, a flat-screen TV and dining furniture. The main bedroom features a king-size bed, wardrobe, and bedside tables. The bathroom has a spacious shower with contemporary features.

This apartment has a balcony. Ideal for up to four people staying.



Two Bedroom Apartment

The Two Bedroom Apartment is 60sqm (645sqft) and features a living area, a fully equipped kitchen, two bedrooms, and one bathroom.

The kitchen is fully equipped with modern appliances. The living area is furnished with a sofa, coffee table, a flat-screen TV and dining furniture. The main bedroom features a king-size bed, wardrobe, and bedside tables. The second bedroom has two single beds. The bathroom has a spacious shower with contemporary features.

This apartment has a balcony. Ideal for up to four people staying.

Additional info

Check in and check-out times.

Check-in at 15:00

Check out at 11:00

Access

- On arrival at the apartment all you need to do is give us a call on +44(0)20 3983 6300 and we can provide remote access to the building. When you arrive at the apartment you will be able to unlock your apartment door using the Klevio app.

Parking

- There is onsite underground car parking, subject to availability.

Booking Restrictions & Deposits

- 21 years of age
- No local restrictions on bookings

Pets

- Pets allowed (on arrangement only) and are chargeable
- 15kg weight limit



Facilities and Amenities

Our serviced apartment in Southampton offers a range of amenities to ensure a comfortable and enjoyable stay.

Here is a list of aparthotel amenities at Charles Hope Southampton Centre.



Wi-Fi is available in the rooms.



Smoke alarms



Kitchenette



Heating



Stovetop



Cleaning services



Oven



Gym



Refrigerator



Toaster



Nespresso machine



Smart TV



Towels



Lift



CCTV in common areas



Distances Train station + Attractions

- Prime location close to the Marina & a short drive to Paulton's Park theme park
- Great transport links: Southampton Central Station is 5-minutes drive away & Southampton Airport a 20-minute drive
- Enjoy a variety of dining options from local cafes to trendy bars and restaurants
- A shopper's paradise awaits at Old George Mall & Cross Keys shopping centre with high street stores, boutiques, and dining options

Map + location.

