

The background image shows the Battersea Power Station in London, a large brick building with two prominent white chimneys on the left. In the foreground, there is a green lawn, a blue metal fence, and a paved path. The sky is clear and blue.

# Charles Hope

**LONDON  
BATTERSEA**



# Intro/ Property Summary

Welcome to Charles Hope London Battersea serviced apartments, located in Linear Place, close to the site of the historic Battersea Power Station and popular Battersea Dogs' Home.

With quick contactless check-in, these serviced apartments are a home away from home, fitted with fully equipped kitchens, modern amenities and comfortable furnishings, everything you could want for a comfortable stay. Whether you're staying for business or leisure, you can be sure that you'll enjoy your time at Charles Hope London Battersea.

These serviced apartments are a home away from home, with fully fitted kitchens and every modern amenity you could want for a comfortable stay. Whether you're staying for business or leisure, you'll enjoy the best of both worlds at Charles Hope London Battersea.

Located less than an hour's drive from Heathrow Airport, and within easy reach of transport links into the capital with it's vital business district, national museums and great shopping destinations.

Ideally located if you enjoy a relaxing walk through a well-appointed park or exploring museums, these apartments have everything you could want in for short or long term accommodation.



# Bedrooms

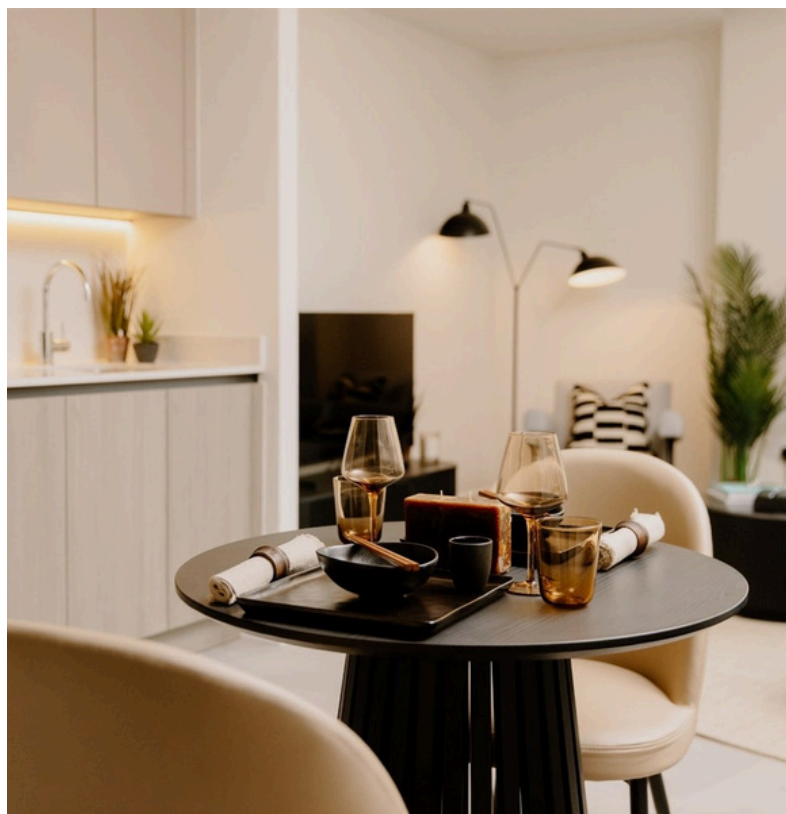
## Standard Studio

From the moment you step into this spacious 42 sqm open-plan apartment, you'll be greeted by an abundance of natural light that floods the space, creating a bright, airy, and welcoming atmosphere. Designed with both style and comfort in mind, the studio has a private balcony and is furnished to a high standard and thoughtfully arranged to make the most of the layout.

The fully equipped kitchen area includes all the essentials you need for cooking at home, while the cosy seating area invites you to relax after a day of exploring the city. A comfortable double bed, dressed with soft, high-quality linens, ensures you get a restful night's sleep.

The apartment also features a separate modern bathroom, complete with a sleek shower and contemporary fixtures.

Weekly housekeeping service is included, and a washer and dryer are provided within the apartment, making it perfectly suited for both short and longer stays. You'll also enjoy high-speed Wi-Fi and a Smart TV, offering seamless connectivity and entertainment to enhance your time in the capital.





# Bedrooms

## One Bedroom Apartment

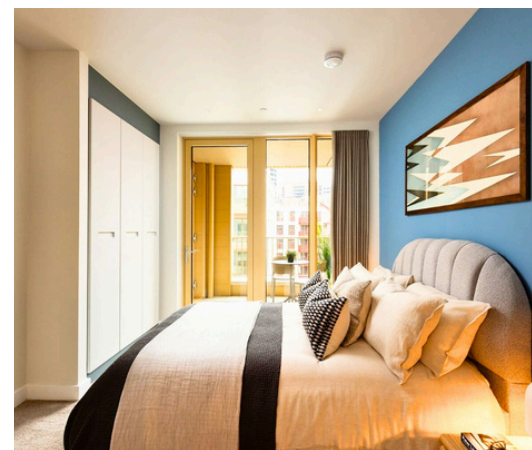
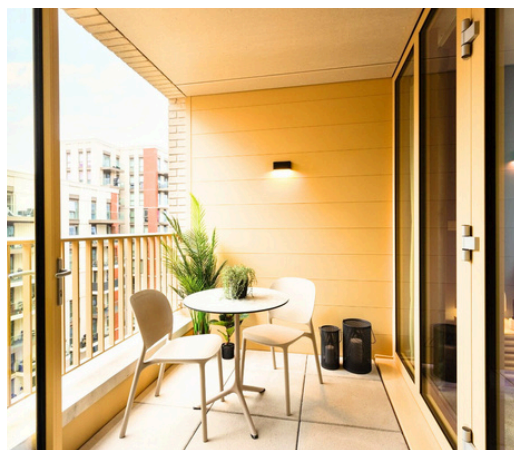
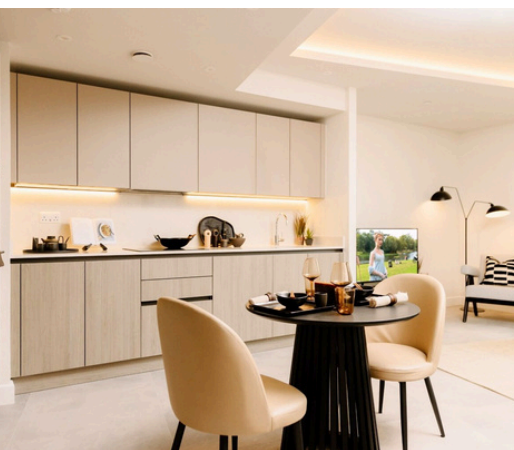
This modern one-bedroom apartment is a peaceful escape from the busyness of everyday life. Ideal for solo travellers or couples, it is perfectly situated close to transport links, entertainment venues, and with quick access to key London business hubs is ideal if you're travelling for work.

Inside, you will find a bright and comfortable living area with cosy seating and a Smart TV leading to a private balcony. The apartment is tastefully decorated, accented with warm and inviting touches that create a relaxing atmosphere to return to after a day of work or sightseeing.

The fully fitted kitchen includes everything you could need for your stay

The bedroom features a king-size bed dressed in premium bedding, along with ample storage space. Large windows fill the bedroom and living space with natural light, giving the apartment an airy and uplifting feel.

The bathroom is fitted with a bath or shower/walk-in shower, helping you to start the day refreshed and ready for exploration or work.



## Two Bedroom Apartment

This contemporary two-bedroom apartment offers a calm and comfortable retreat from the pace of city life. The ideal accommodation option for friends, colleagues, or small families, it is conveniently located near transport links and cultural attractions. The apartment combines the ease of modern city living with the warmth of a true home, giving you space to relax and recharge while enjoying everything London has to offer.

Inside, a spacious living area welcomes you with soft seating, a Smart TV, and carefully chosen décor that blends neutral tones with inviting, homely accents. It's the perfect place to unwind after a busy day. The apartment also has a private balcony where you can enjoy a relaxing drink on a warm evening.

A fully equipped kitchen provides all the essentials for your stay.

Both bedrooms are thoughtfully furnished, with comfortable beds, soft linens, and plenty of storage. Large windows bring in plenty of natural light, creating a bright, uplifting atmosphere throughout the apartment.

The bathroom features modern fittings and a shower.



# Bedrooms

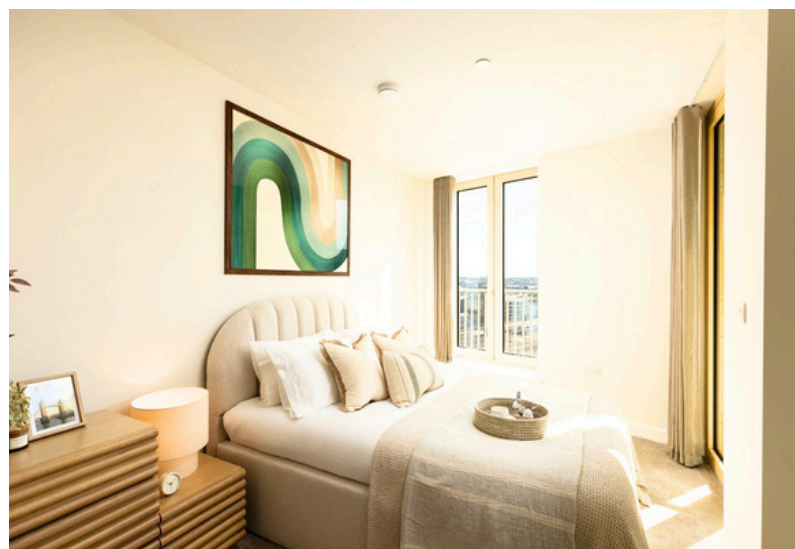
## Superior Two Bedroom Apartment

This modern and stylish two-bedroom apartment is located in the sought-after neighbourhood of Nine Elms, London. Close to the banks of the Thames, with local cafés, restaurants, and shops nearby, it offers the perfect setting for couples, families or groups of friends looking for a relaxing base with easy access to central London.

Inside, you'll find a spacious open-plan living area with private balcony, a fully equipped kitchen, comfortable lounge seating, and a dining area perfect for enjoying meals together. Large windows in the living area and both bedrooms allow natural light to fill the space, creating a bright, airy atmosphere. Decorated in calming neutral tones with stylish accents, the apartment feels both elegant and inviting.

The fully equipped kitchen is fitted with all the modern appliances you could need during your stay, the dining area comfortably seats four and is great for both relaxed breakfasts and evening meals whether you're eating alone or entertaining guests.

Each bedroom features a king-sized bed dressed in soft, premium bedding, with spacious wardrobes providing ample storage for your belongings.



# Additional info

## Check in and check-out times.

Check-in at 15:00

Check out at 11:00

## Access

- Manned 24/7 by a site team, guests must provide name and apartment number on arrival. A fob is then provided for use during your stay - this will provide access to the apartment.

## Parking

- There is no onsite parking, the nearest car park is Battersea Power Station Car Park, which is an 8-minute walk away from the apartments.

## Booking Restrictions & Deposits

- 21 years of age
- There is a 15 mile local restriction

## Pets

- Pets allowed (on arrangement only) and are chargeable
- 15kg weight limit





# Facilities and Amenities

Our serviced apartments in Liverpool offers a range of amenities to ensure a comfortable and enjoyable stay.

Here is a list of amenities at Charles Hope Liverpool.

- |   |  |
|---|--|
|  Wi-Fi is available in the rooms. |  CCTV in common areas   |
|  Fully Equipped Kitchen           |  Smoke alarms           |
|  Stovetop                         |  24-hour security       |
|  Oven                             |  Heating                |
|  Refrigerator                     |  Cleaning services      |
|  Toaster                          |  Reception services     |
|  Coffee machine                  |  Co-working space      |
|  Microwave                      |  24hr Gym             |
|  Smart TV                       |  Residents' lounge    |
|  Towels                         |  Library              |
|  Hairdryer                      |  Cinema               |
|  Washer/Dryer                   |  Children's play area |
|  Lift Safety & Security         |  Games room           |
|  Pet Friendly                   |  |



# Distances Train station + Attractions

- Prime location close to the Battersea Park and Vauxhall Pleasure Gardens
- Great transport links: Just an 8-minute walk from Nine Elms station
- Enjoy a variety of dining options from local cafes to trendy bars and restaurants
- A shopper's paradise with additional attractions awaits at the refurbished Battersea Power Station

## Map + location.

