



Charles Hope

MANCHESTER  
CENTRE



# Intro/ Property Summary

Welcome to our modern serviced apartments in Manchester! Immerse yourself in the vibrant pulse of the city. Indulge in culinary delights at The Pasta Factory, a popular eatery just a 3-minute walk away, or Pot Kettle Black, which is only a minute from our doorstep. Elevate your stay with a fully equipped gym, co-working space, roof terrace, and cinema. Enjoy the prime location—just a 6-minute walk from Manchester Victoria Train Station.

Located at the nexus of Manchester's vibrant urban scene, our serviced apartment offers unparalleled access to some of the city's most dynamic neighbourhoods. Situated close to the Northern Quarter, the NOMA innovation district, and Manchester Victoria Station, you'll experience life at the heart of it all. The Northern Quarter, known for its eclectic mix of independent cafes, quirky bars, and boutique shops, is just a stone's throw away. Perfect for those who appreciate a bohemian atmosphere combined with a rich industrial heritage.

Adjacent to the apartments is the NOMA innovation district, a cutting-edge area home to tech companies, creative industries, and innovative start-ups. NOMA embodies Manchester's forward-thinking spirit and commitment to progress and sustainability.

Manchester Victoria Station is within easy reach, offering seamless connections across the city and beyond. Whether commuting for work or exploring the wider region, Victoria Station provides unmatched convenience.



# Bedrooms

## One Bedroom Apartment

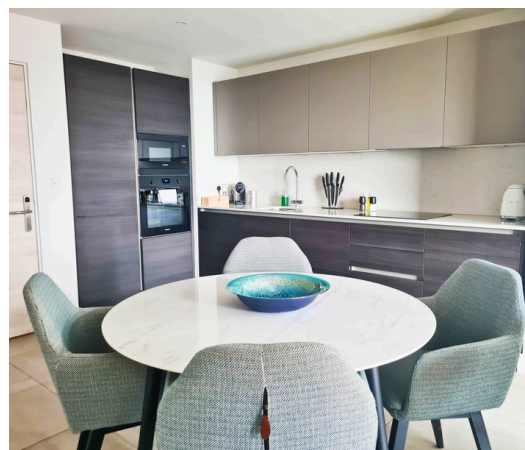
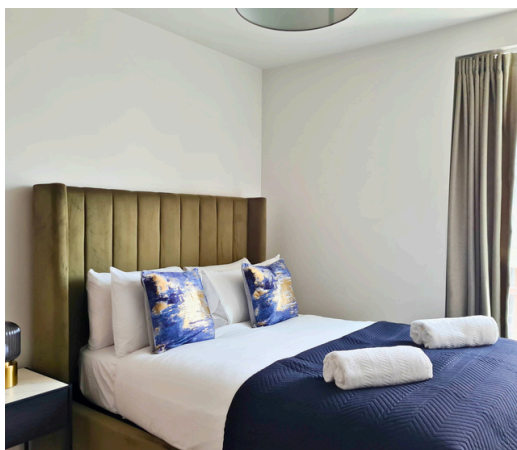
Our one-bedroom apartment, a cosy retreat designed for modern living. Spanning 46 sqm (495sqft), this space seamlessly blends functionality with style.

Upon entry, abundant natural light floods through expansive windows, enhancing the contemporary design that integrates the living, kitchen, dining, and sleeping areas into a fluid and inviting atmosphere.

Relax in the plush comfort of the double bed, perfect for unwinding after a day of exploration or work. The fully equipped kitchen includes a washer and dryer for added convenience, ensuring you have everything needed to prepare delicious meals.

Stay connected with complimentary Wi-Fi and enjoy entertainment on the Smart TV, ideal for streaming your favorite shows or catching up on the latest news.

The bathroom features a modern bath or shower, providing a refreshing start or end to your day.



## Two Bedroom Apartment

Our two-bedroom apartment—a spacious retreat designed for comfort and convenience—offers 70sqm (753sqft) of meticulously crafted living space blending functionality with elegance.

Inside, abundant natural light floods through expansive windows. The thoughtful layout seamlessly integrates a contemporary living area with a fully equipped kitchen, dining space, and lounge, creating an ideal setting for relaxation and socializing.

The bedrooms feature a comfortable king bed in the master and a double bed in the second bedroom, providing tranquil havens for restful nights. The bathroom offers a contemporary bath or shower.

Prepare home-cooked meals in the fully equipped kitchen with modern appliances and ample counter space. A washer and dryer are conveniently located within the apartment for effortless laundry tasks. Stay connected with complimentary Wi-Fi and enjoy entertainment on the Smart TV, perfect for streaming your favourite shows or movies.



# Bedrooms

## Two Bedroom Apartment with Balcony

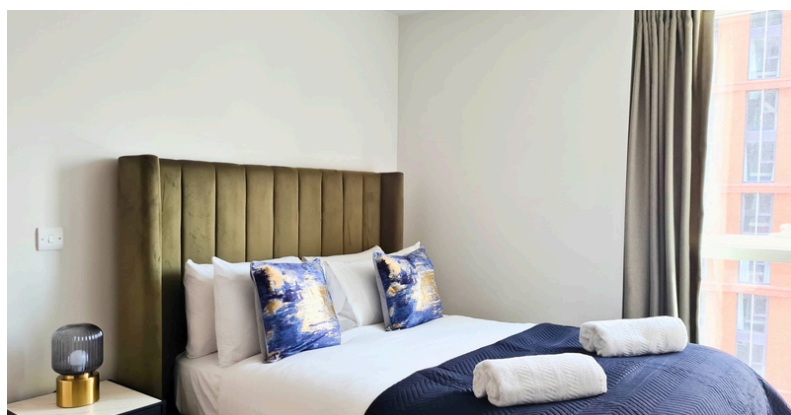
Our stylish two-bed two-bath apartment is a spacious 70sqm (753sqf), a modern retreat designed with your comfort and convenience in mind.

As you step inside the apartment you will notice the bright and airy feel provided by the floor to ceiling doors opening out onto the private balcony. With contemporary décor throughout, the open plan living area integrates a fully equipped kitchen, dining space and lounge, perfect for relaxation and socialising.

Both bedrooms feature comfortable double beds fitted with luxury linens providing a peaceful haven to ensure a restful night's sleep. Each bedroom comes with a modern ensuite bathroom with bath or shower.

Prepare home-cooked meals on your own schedule in the fully equipped kitchen fitted with modern appliances and ample counter space. A washer and dryer are also provided for your convenience.

Stay connected with complimentary, high-speed Wi-Fi and stream your favourite films and TV shows on the Smart TV.





# Additional info

## Check in and check-out times.

Check-in at 15:00

Check out at 11:00

## Access

- On arrival at reception you will be greeted by the concierge, who will ask you for your name and apartment number. Upon confirmation of your details you will be provided with an access fob & key for your stay

## Parking

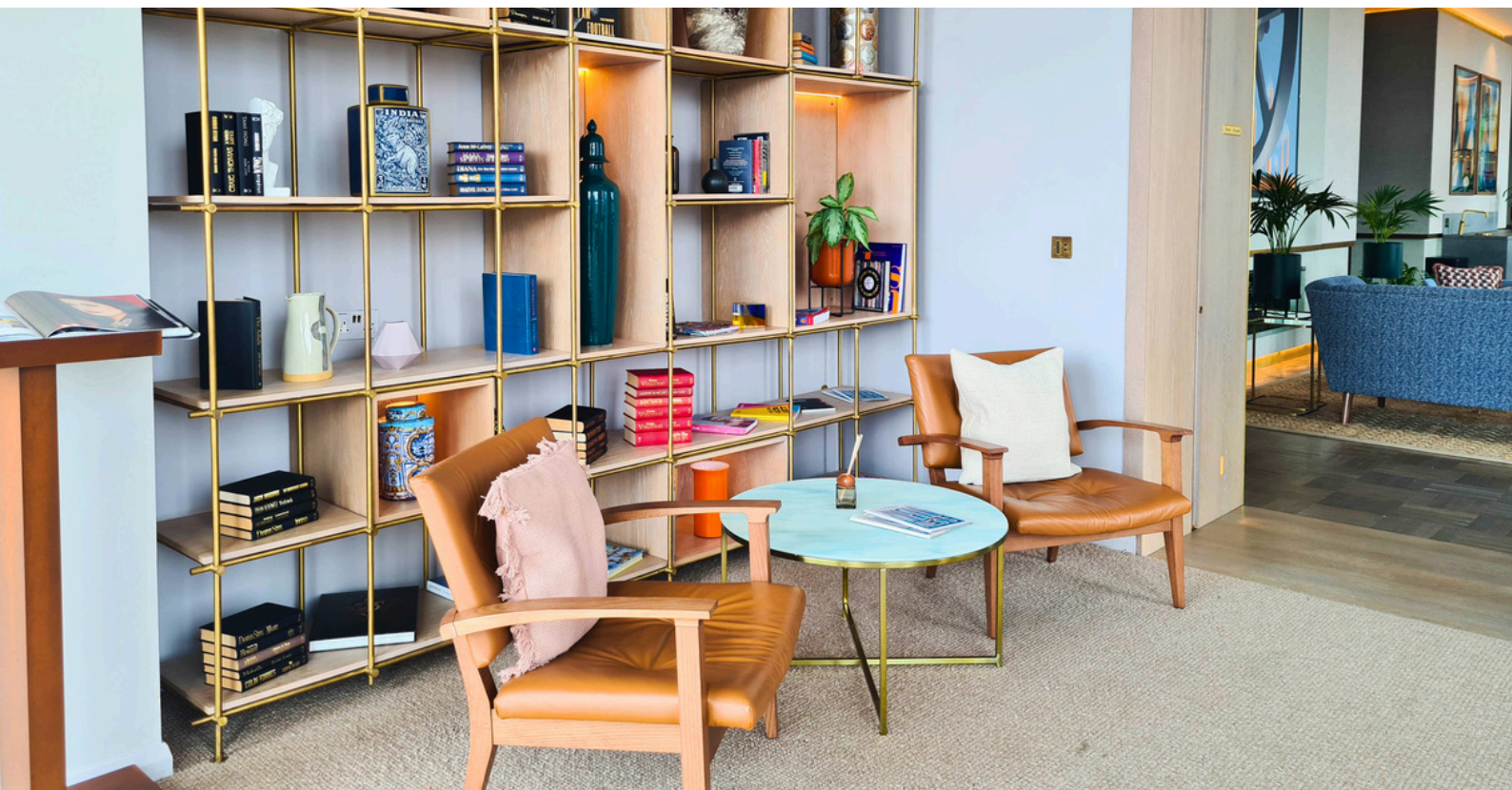
- There is no parking onsite, the nearest car park is Unicol House car park which is a 1 minute walk away.

## Booking Restrictions & Deposits

- 21 years of age
- There is a 15 mile local restriction

## Pets

- Pets allowed (on arrangement only) and are chargeable
- 15kg weight limit





# Facilities and Amenities

Our serviced apartments in Manchester offer a range of amenities to ensure a comfortable and enjoyable stay.

Here is a list of amenities at Charles Hope Manchester Centre.

-  Wi-Fi is available in the rooms
-  Fully Equipped Kitchen
-  Stovetop
-  Oven
-  Refrigerator
-  Toaster
-  Nespresso machine
-  Microwave
-  Smart TV
-  Towels
-  Hairdryer
-  Lift Safety & Security
-  CCTV in common areas
-  Pet Friendly
-  Smoke alarms
-  24-hour security
-  Heating
-  Cleaning services
-  Co-working Space
-  Gym





# Distances Train station + Attractions

- Prime location close to Manchester Opera House & Piccadilly Gardens
- Great transport links: Manchester Victoria Station is 7-minutes' walk away
- Enjoy a variety of dining options from local cafes to trendy bars and restaurants
- A shopper's paradise awaits at Manchester Arndale shopping centre with high street stores, boutiques, and dining options

## Map + location.

