



 Charles Hope

**BIRMINGHAM
WESTSIDE**

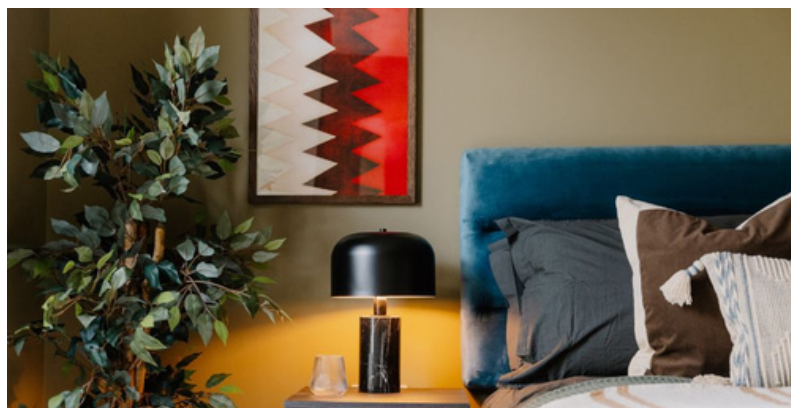
Intro/ Property Summary

Welcome to Charles Hope Birmingham Westside, located in Inkwell Place, close to the quiet village of Edgbaston, and situated conveniently in West Birmingham, close to public transport links, and an array of charming shops and cafes.

With quick contactless check-in, these serviced apartments are a home away from home, with fully fitted kitchens and every modern amenity you could want for a comfortable stay. Whether you're staying for business or leisure, you'll enjoy the best of both worlds at Charles Hope Birmingham Westside.

Located just a 30-minute drive from Birmingham Airport, and within easy reach of Birmingham City Centre with its vital business hubs and the architecturally stunning shopping centres, Bullring and Great Western Arcade with their high street shops and unique boutiques, you can enjoy everything the city has to offer.

If you're a fan of art, or enjoy a relaxing walk through a stunning garden, then you'll find the Museum and Art Gallery, or beautiful Birmingham Botanical Gardens have everything you could want for a relaxing day out.



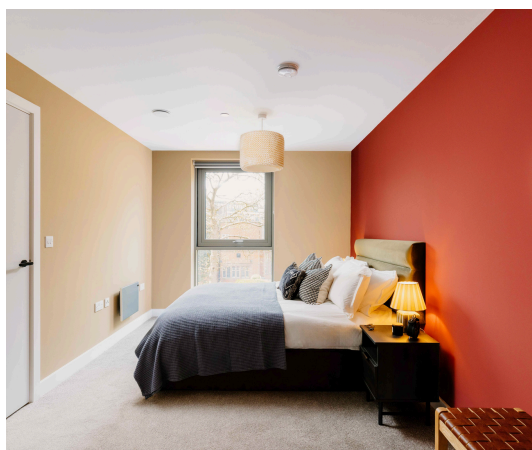
Bedrooms

One Bedroom Apartment

This modern one-bed apartment is situated in charming Edgbaston, a suburb of colourful Birmingham. Ideal for solo travellers or couples, it offers a vibrant yet comfortable home base in the West Midlands city.

The apartment is spacious with an open plan living area with fully equipped kitchen, dining space and lounge, a separate bedroom with comfortable king-size bed and a luxury bathroom with waterfall shower.

Natural light fills the space through large windows, free Wi-Fi, housekeeping, and a dishwasher.



Two Bedroom Apartment

This stylish two-bed two-bath apartment is located close to the amenities of charming Edgbaston village, offering easy access to restaurants, entertainment and shopping facilities. Ideal for couples, families, colleagues and friends, combining access to vibrant Birmingham with the comfort and privacy of home.

The two bedrooms are furnished with king-size beds fitted with luxury linen sheets, the separate living room has a SmartTV and comfortable seating and the fully equipped kitchen has fridge-freezer, hob, oven, microwave and coffee maker, plus a space for dining.

Other amenities provided with the apartment include free Wi-Fi, weekly housekeeping services, dishwasher and a combi washer/dryer.

Additional info

Check in and check-out times.

Check-in at 15:00

Check out at 11:00

Access

- Manned 24/7 by a site team. Guests must provide name and apartment number on arrival. The fob is then given to you for use during their stay - this will provide access to the apartment.

Parking

- There is no on-site parking available. The nearest car park is ParkBee, a 1-minute walk away.

Booking Restrictions & Deposits

- 21 years of age
- There is a 15 mile local restriction

Pets








- Pets allowed (on arrangement only) and are chargeable
- 15kg weight limit



Facilities and Amenities

Our serviced apartments in Birmingham offers a range of amenities to ensure a comfortable and enjoyable stay.

Here is a list of amenities available to guests at Charles Hope Birmingham Westside:

-  Wi-Fi is available in the rooms.
-  Fully Equipped Kitchen
-  Stovetop
-  Oven
-  Refrigerator
-  Toaster
-  Coffee machine
-  Microwave
-  Smart TV
-  Towels
-  Hairdryer
-  Washer/Dryer
-  Gym
-  Lift Safety & Security
-  CCTV in common areas
-  Smoke alarms
-  24-hour security
-  Heating
-  Cleaning services
-  Reception services
-  Bike Store
-  Co-working Space
-  Garden/Courtyard



Distances Train station + Attractions

- Prime location in West Birmingham, close to Edgbaston Village with an array of bars and restaurants
- Great transport links: Five Ways Station is a 20-minute walk away
- Bullring & Grand Central shopping centre is less than 10-minutes away by car, with high street stores, boutiques, and dining options

Map + location.

