

The background of the entire page is a photograph of a coastal scene. In the foreground, there is a wide, pebbly beach with small, light-colored stones. The beach curves from the bottom left towards the right. In the middle ground, the calm sea meets the shore. In the background, a long pier or promenade extends into the water under a clear, light blue sky. The entire image is framed by a thin, dark blue border.

 Charles Hope

**BRIGHTON &  
HOVE**



# Intro/ Property Summary

Welcome to Charles Hope Brighton & Hove, where sleek sophistication meets urban convenience in the heart of Hove.

Enjoy seamless connections to neighbouring locales; culinary enthusiasts will delight in the proximity of The Ginger Pig, a renowned dining establishment a mere 14-minute walk away, tantalising taste buds with its flavourful delights.

For those seeking a vibrant nightlife scene, Rockwater Hove beckons, just a leisurely 20-minute stroll from our doorstep, promising lively evenings and memorable experiences. Take advantage of the lush greenery at Hove Park, a mere 10-minute walk away, offering a tranquil escape from the bustling city life. Indulge in the convenience of our prime location, a mere 10 minutes from Hove Station, ensuring swift access to all your desired destinations.

Whether travelling for business or leisure, Charles Hope Hove offers an array of attractions awaiting your exploration. From quaint cafes to bespoke boutiques, from picturesque seaside promenades to cultural enclaves, the essence of Hove unfolds just moments from our accommodation, inviting you to immerse yourself in its myriad charms.



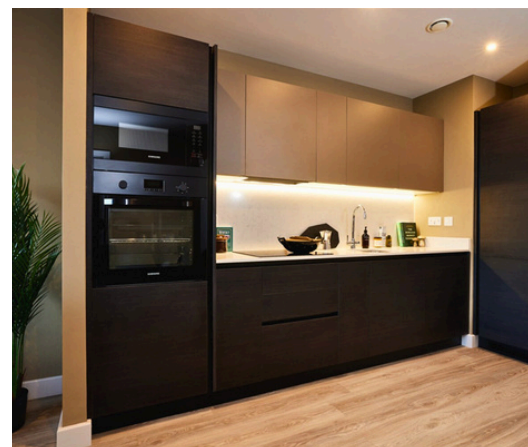
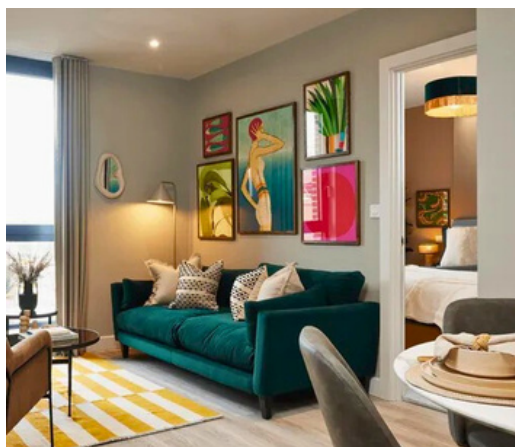
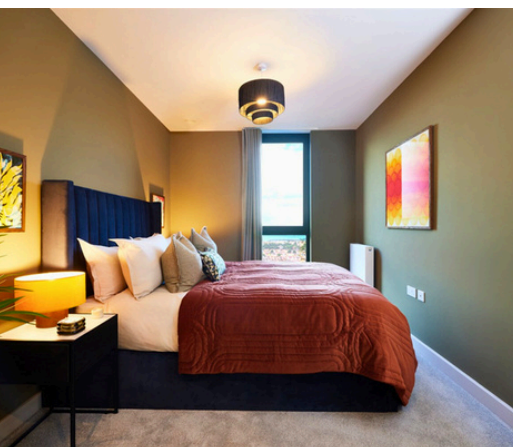
# Bedrooms

## One Bedroom Apartment

The spacious one bedroom apartment, which is 51.2 sqm, features a modern living space with abundant natural light flooding through expansive windows.

The fully equipped kitchen boasts modern appliances and ample storage. The bedroom provides a tranquil sanctuary for relaxation, with a comfortable bed adorned with soft linens to ensure a restful night's sleep. The bathroom features a shower or bath and modern fixtures perfect for a refreshing morning routine.

Housekeeping is included, and apartments also include a washer and dryer. Enjoy amenities like WiFi and Smart TVs for a seamless Hove experience.



## Two Bedroom Apartment

The two bedroom two bathroom apartment, which is 68.3 sqm, features a modern layout that effortlessly integrates the living, kitchen, and dining areas, providing a versatile space for relaxation and entertainment.

As you step inside, you'll be greeted by abundant natural light flooding through expansive windows. The fully equipped kitchen boast modern appliances and ample storage. The bedrooms provide a tranquil sanctuary for relaxation, with comfortable beds adorned with soft linens to ensure a restful night's sleep.

The bathroom features a shower or bath and modern fixtures perfect for a refreshing start to your day.

Housekeeping is included, and apartments also include a washer and dryer. Enjoy amenities like WiFi and Smart TVs for a seamless Hove experience.



# Bedrooms

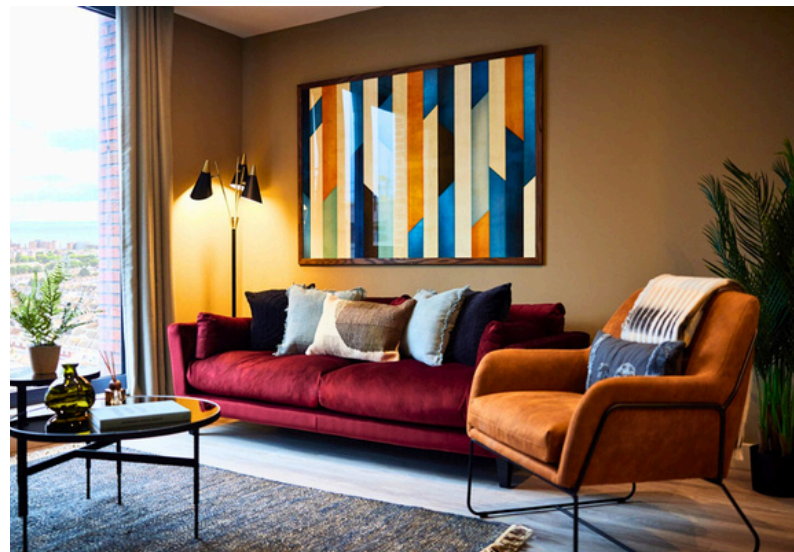
## Two Bedroom Apartment - Balcony

The two bedroom two bathroom apartment, which is 68.3 sqm, features a modern layout that effortlessly integrates the living, kitchen, and dining areas, providing a versatile space for relaxation and entertainment.

As you step inside, you'll be greeted by abundant natural light flooding through expansive windows. The fully equipped kitchen boast modern appliances and ample storage. The bedrooms provide a tranquil sanctuary for relaxation, with comfortable beds adorned with soft linens to ensure a restful night's sleep.

The bathroom features a shower or bath and modern fixtures perfect for a refreshing start to your day.

Housekeeping is included, and apartments also include a washer and dryer. Enjoy amenities like WiFi and Smart TVs for a seamless Hove experience.





# Additional info

## Check in and check-out times.

Check-in at 15:00

Check out at 11:00

## Access

- On arrival at the apartment us a call on +44(0)20 3983 6300 and upon confirmation of your booking, you will be provided with access into the apartment.

## Parking

- There is 7 parking spaces available at £15 per night

## Booking Restrictions & Deposits

- 21 years of age
- There is a 15 mile local restriction

## Pets

- Pets allowed (on arrangement only) and are chargeable
- 15kg weight limit





# Facilities and Amenities

Our serviced apartment in Brighton & Hove offers a range of amenities to ensure a comfortable and enjoyable stay.

Here is a list of amenities at Charles Hope Brighton & Hove.

- |   |   |
|---|---|
|  Wi-Fi is available in the rooms. |  Smoke alarms          |
|  Fully Equipped Kitchen           |  Heating               |
|  Stovetop                         |  Cleaning services     |
|  Oven                             |  Pet Friendly          |
|  Refrigerator                     |  Co-working Space      |
|  Toaster                          |  Meeting Rooms         |
|  Nespresso machine               |  24hr Gym             |
|  Microwave                      |  Roof Terrace        |
|  Smart TV                       |  BBQ Area            |
|  Towels                         |  Private Dining Room |
|  Hairdryer                      |   |
|  Washer/Dryer                   |   |
|  CCTV in common areas           |   |





# Distances Train station + Attractions

- Prime location close to Hove Museum of Creativity & Brighton Beach
- Great transport links: Hove Station is 15-minutes' walk away
- Enjoy a variety of dining options from local cafes to trendy bars and restaurants
- A shopper's paradise awaits at Churchill Square Shopping Centre & Goldstone Retail Park with high street stores, boutiques, and dining options

## Map + location.

